

APRIL 2009 INTERPRETIVE SCHEDULE



Wednesday, April 1, 2009

1:00 p.m. – Walk ♿ - Desert Scents

1 hour

Enjoy an easy stroll through the visitor center garden with Volunteer Naturalist Ingrid Coffin. Use your senses on this plant exploration program that meets at the visitor center entrance.



Thursday, April 2, 2009

9:00 a.m. – Hike – Mountain Palm Springs

5 hours

Join Volunteer Naturalists Paul Larson and Mary Ekelund for a moderate to strenuous 5-mile loop hike through several palm groves and Torote Bowl at the southern end of the park. Bring water, lunch, binoculars, hat, sunscreen and sturdy footwear. Meet at the entrance to Mountain Palm Springs on Highway S-2 at mile post 47.1.

10:00 a.m. – Talk/Walk – What is a Borrego?

1 hour

Join Park Interpreter Nova Clarke at the Borrego Palm Canyon trailhead to learn about our resident desert bighorns. From there we will wander part way up the canyon to learn a bit more about the ecosystem, look at flowers, and perhaps see a bighorn.



ALL PROGRAMS ARE FREE OF CHARGE UNLESS OTHERWISE NOTED. PROGRAMS ARE HELD AT THE VISITOR CENTER UNLESS OTHERWISE SPECIFIED.

DOGS ARE NOT PERMITTED ON TRAILS OR TOURS. ♿ DENOTES PROGRAMS ACCESSIBLE TO DISABLED. PLEASE CALL AHEAD FOR SPECIAL NEEDS ACCOMMODATION, (760) 767-4205.

APRIL 2009 INTERPRETIVE SCHEDULE



Saturday, April 4, 2009

8:00 a.m. – Talk - The Borrego Hawk Watch Experience

1 hour

Discover the hawk watch phenomenon with Volunteer Naturalist and hawk watcher Joe Hopkins. Meet at the Visitor Center flagpole to caravan out to the site, observe hawk watchers on duty, and we hope, see migrating raptors. Bring binoculars, water, snacks, and appropriate clothing.

8:00 a.m. - \$\$ - Escape to Anza-Borrego: Cool Canyon

4 hours

Fee: Members \$25; Non-members \$35

Cool Canyon typically receives more rainfall than other desert canyons, resulting in an amazing variety of plant life, including flowers and mosses as well as more typical desert and chaparral species. This moderately strenuous hike will be approximately 2.5 miles, and will include quite a bit of scrambling over large rock outcrops. **Call ABFI for more information: (760)767-4063.**

8:00 a.m. - \$\$ - Pacific Crest Trail Hike - Lost Valley to Chihuahua Valley

9.5 hours

Instructor: Reena Deutsch **Fee: Member \$25; Non-member \$35**

Meet in the dirt lot at the intersection of Routes 79 and S2.

Mostly ascending, this 9-mile hike offers views of beautiful boulder-dotted hills and the lookout tower on Hot Springs Mountain, while passing through oaks, pines, and chaparral. Bring lunch, water, sun protection, and all essentials. Hikes are one-way; each hiker must be willing to participate in a vehicle shuttle. **Call ABFI for more information: (760)767-4063.**

8:30 a.m. - \$\$- Prehistoric Archaeology of Anza-Borrego

Saturday, April 4, 8:30 am – 4:30 pm and Sunday, April 5, 9 am – 12 pm

Instructors: Joan Schneider, Ph.D. and Claude Warren

Fee: Member \$70; Non-member \$95. Meet at Begole Archaeological Research Center.

Learn from an archaeologist, through classroom sessions and field experiences, about the prehistoric peoples of this area—how they managed to live here, and how they celebrated, mourned, married and traded. Get an “insiders” view of the archaeological facility and resources of the Colorado Desert District, and learn how archaeologists have come to understand the stories of past peoples. Academic credit available. **Call ABFI for more information: (760)767-4063.**

9:30 a.m. – Talk – Upper Coyote Canyon Tailgate Tour

4 hours

Join Ranger Don Strampfer to learn more about Upper Coyote Canyon. Meet at California Department of Forestry Fire Station in Warner Springs. Bring lunch. **A 4x4 vehicle is required.**

10:00 a.m. – Talk – Freeman Acquisition Tailgate Tour

2.5 hours

Join Ranger Paul Reisman for a journey through some of the most pristine and challenging off road country around. Learn what life was like here in the past and learn how you can help protect and preserve these lands while keeping them open for use. Meet at the intersection of Holly Road and S-22. **High clearance 4x4 required.**

ALL PROGRAMS ARE FREE OF CHARGE UNLESS OTHERWISE NOTED. PROGRAMS ARE HELD AT THE VISITOR CENTER UNLESS OTHERWISE SPECIFIED.

DOGS ARE NOT PERMITTED ON TRAILS OR TOURS. ♿ DENOTES PROGRAMS ACCESSIBLE TO DISABLED. PLEASE CALL AHEAD FOR SPECIAL NEEDS ACCOMMODATION, (760) 767-4205.

APRIL 2009 INTERPRETIVE SCHEDULE



Saturday, April 4, 2009

- 10:00 a.m. - ♿ - Junior Rangers** **45 minutes**
Special program for children ages 7-12. Discover secrets of the desert environment.
Sign up at the Visitor Center as space is limited
- 11:00 a.m. - Talk - ♿ - Tracks Tell Tales** **45 minutes**
Tracks tell the fascinating stories of the lives of our animal neighbors in the Anza Borrego Desert. Meet our Volunteer Tracker-Naturalist Karin Vickars in the Discovery Lab, and start to learn to read these tales of life -- and death -- in the desert.
- 12:30 p.m. - Talk - ♿ - Where is that Wascally Wabbit?** **45 minutes**
Join Park Interpreter Nova Clarke to learn about the rabbits, roadrunners, and coyotes of Anza-Borrego Desert State Park. Find out what the cartoons get right and wrong. Meet in the Discovery Lab at the Visitor Center.
- 2:00 p.m. - Talk - ♿ - Cahuilla Medicine Chest** **45 minutes**
Join Volunteer Naturalist Mike Bigelow in the Discovery Lab to learn about the medicine chest full of effective treatments that the Cahuilla people utilized long before the first Europeans arrived.
- 6:00 p.m. - \$\$ - Music Under the Stars With Rick Shea and the Losin' End**
Tickets are \$20 and a limited number of seats are available.
Nierenberg Amphitheater at ABDSP Visitor Center
Enjoy a beautiful evening under the stars with music by the ever-popular Rick Shea and the Losin' End. Rick Shea's songs embrace everything from the traditional folk and country of The Carter Family and Merle Haggard to Roots Rock and southwest Norteno. Plan to sit and listen, dance a little, or just enjoy the company of friends in this outdoor setting. Light snacks will be provided, and we'll have a no-host bar with beer and wine. Limited seating. **Call ABFI for more information: (760)767-4063.**
- 7:30 p.m. - Campfire - ♿ - "Boulders, Palm trees and Water, Oh MY!"** **1 hour**
What happens when a 16 foot wall of water comes pouring out of Borrego Palm Canyon?
Join Ranger Jennifer Rodrigues at the Borrego Palm Canyon Campfire center as she tells all.



ALL PROGRAMS ARE FREE OF CHARGE UNLESS OTHERWISE NOTED. PROGRAMS ARE HELD AT THE VISITOR CENTER UNLESS OTHERWISE SPECIFIED.

DOGS ARE NOT PERMITTED ON TRAILS OR TOURS. ♿ DENOTES PROGRAMS ACCESSIBLE TO DISABLED. PLEASE CALL AHEAD FOR SPECIAL NEEDS ACCOMMODATION, (760) 767-4205.

APRIL 2009 INTERPRETIVE SCHEDULE



Sunday, April 5, 2009

- 8:00 a.m. – Walk – Bird Walk at Tamarisk Grove** **2 hours**
Search for birds of the season in the area of Tamarisk Grove Campground (including Yaqui Well) with Ranger Bob Theriault. Meet at the campground office, located on County Road S-3, near the junction with State Highway 78. Bring binoculars and sturdy shoes for this moderate stroll of up to 2 hours.
- 8:00 a.m. - \$\$ - Pacific Crest Trail Hike - Tule Spring to Table Mountain Truck Trail** **8.5 hours**
Instructor: Reena Deutsch **Fee: Member \$25; Non-member \$35**
Meet at Diner 371 on Route 371 in Anza. This 7-mile hike affords panoramic views of the wild northern canyons and creeks that flow down into Coyote Canyon toward the Borrego Valley. Bring lunch, water, sun protection, and all essentials. Hikes are one-way; each hiker must be willing to participate in a vehicle shuttle. **Call ABFI for more information: (760)767-4063.**
- 10:00 a.m. -Walk – Unsolved Mysteries of Mine Wash** **90 minutes**
Join Ranger Jeri Zemon to see the remains of a Kumeyaay village site. We will look for clues about the daily life of the people who once lived there. Easy walk. Directions: from Tamarisk Grove Campground turn east on Highway 78, continue 2.7 miles to Mine Wash. Road. Drive 1 mile on this passable dirt road to the parking area.
- 10:00 a.m. - Roving Naturalist in Borrego Palm Canyon** **3 Hours**
Volunteer naturalist Joe Hopkins will be roaming the Borrego Palm Canyon Trail searching for bighorn sheep and other interesting features along the trail. Look for him as you hike to the palm oasis. As an experienced naturalist, he can answer many of your questions about the park. If bighorn are about, he is sure to find them! **This is not a guided hike.**
- 11:00 a.m. – Talk - ♿ - In Search of the Elusive Elephant Tree** **30 Minutes**
The seldom seen elephant tree survives in only a few scattered and isolated spots in California. Join Volunteer Naturalist Karen Cormier at the entrance to the Visitor Center to find out how to identify these distinctive trees, hear why Native Americans valued the trees, and discover where you can look for elephant tree herds “in the wild.”

Monday, April 6, 2009

- 10:00 a.m. - ♿ - Junior Rangers** **45 minutes**
Special program for children ages 7-12. Discover secrets of the desert environment.
Sign up at the Visitor Center as space is limited
- 10:00 a.m. – Talk - ♿ - Camels, Sloths, and Seashells --ABDSP fossils** **30 minutes**
Join Volunteer Naturalist Sandra Keeley in the Visitor Center Discovery Lab for a Powerpoint presentation about recent fossil finds in Anza-Borrego.

ALL PROGRAMS ARE FREE OF CHARGE UNLESS OTHERWISE NOTED. PROGRAMS ARE HELD AT THE VISITOR CENTER UNLESS OTHERWISE SPECIFIED.

DOGS ARE NOT PERMITTED ON TRAILS OR TOURS. ♿ DENOTES PROGRAMS ACCESSIBLE TO DISABLED. PLEASE CALL AHEAD FOR SPECIAL NEEDS ACCOMMODATION, (760) 767-4205.

APRIL 2009 INTERPRETIVE SCHEDULE



Tuesday, April 7, 2009

10:00 a.m. - ♿ - Junior Rangers **45 minutes**

Special program for children ages 7-12. Discover secrets of the desert environment.

Sign up at the Visitor Center as space is limited

Wednesday, April 8, 2009

10:00 a.m. - ♿ - Junior Rangers **45 minutes**

Special program for children ages 7-12. Discover secrets of the desert environment.

Sign up at the Visitor Center as space is limited

11:30 a.m. - Talk - ♿ - Cahuilla Medicine Chest **45 minutes**

Join Volunteer Naturalist Mike Bigelow in the Discovery Lab to learn about the medicine chest full of effective treatments that the Cahuilla people utilized long before the first Europeans arrived.

Thursday, April 9, 2009

9:00 a.m. - Walk - Behind the Ghost Mountain Story : Facts and Fabrications **2.5 hours**

Learn about the Marshall South family and their experiment in primitive living on a remote mountain top. Join Volunteer Naturalists Mike and Jan Bigelow on this 2 mile round-trip, steep but scenic walk up Ghost Mountain. Bring water, hat, and sturdy footwear. Meet at the Marshall South Home Trailhead in Blair Valley, 3.2 miles off Highway S2.

9:00 a.m. - Talk - Culp Valley Tailgate Tour **1 hour**

Ranger Rodriguez talks about why this area is one of her favorites in the park. Learn a bit of the history of the area and enjoy the beautiful views! Meet at Paroli Camp in Culp Valley: Take Hwy. S-22 west, up the Montezuma Grade; halfway up the mountain, the road becomes two lanes; take the left lane and look for the "Culp Valley Road" sign and turn left onto the dirt road. Follow this road west and take the left fork in the road.

10:00 a.m. - ♿ - Junior Rangers **45 minutes**

Special program for children ages 7-12. Discover secrets of the desert environment.

Sign up at the Visitor Center as space is limited

11:00 a.m. - Talk ♿ - Solar Cooking Demonstration **1 hour**

Solar energy - the old/new technology. Volunteer Naturalist Eleanor Shimeall demonstrates solar oven cooking and explains why this technology is so important. Meet at the Nierenberg Amphitheater outside the Visitor Center.

1:00 p.m. - Talk - ♿ - Arachnophobia **30 minutes**

Join Park Interpreter Nova Clarke in the Discovery Lab for a look at the eight-legged residents of Anza-Borrego. Find out about their role in the ecosystem and why there is no reason to be afraid of them.

ALL PROGRAMS ARE FREE OF CHARGE UNLESS OTHERWISE NOTED. PROGRAMS ARE HELD AT THE VISITOR CENTER UNLESS OTHERWISE SPECIFIED.

DOGS ARE NOT PERMITTED ON TRAILS OR TOURS. ♿ DENOTES PROGRAMS ACCESSIBLE TO DISABLED. PLEASE CALL AHEAD FOR SPECIAL NEEDS ACCOMMODATION, (760) 767-4205.

APRIL 2009 INTERPRETIVE SCHEDULE



Friday, April 10, 2009

10:00 a.m. - ♿ - Junior Rangers

45 minutes

Special program for children ages 7-12. Discover secrets of the desert environment.

Sign up at the Visitor Center as space is limited

1:00 p.m. – Talk/Walk – What is a Borrego?

1 hour

Join Park Interpreter Nova Clarke at the Borrego Palm Canyon trailhead to learn about our resident desert bighorns. From there we will wander part way up the canyon to learn a bit more about the ecosystem, look at flowers, and perhaps see a bighorn.

7:30 p.m. - \$\$ - Lecture - Cacti of Anza-Borrego

Borrego Springs Performing Arts Center **Suggested donation \$5**

Dr. Jon Rebman, curator of Botany for the San Diego Natural History Museum, will share insights into this very special family of desert plants. **Call ABFI for more information: (760)767-4063.**

Saturday, April 11, 2009

8:00 a.m. - Roving Naturalist in Borrego Palm Canyon

3 hours

Volunteer Naturalist Toni Alexander will be roaming the Borrego Palm Canyon Trail searching for bighorn sheep and other interesting features along the trail. Look for her as you hike to the palm oasis. **This is not a guided hike.**

9:00 a.m. - \$\$ - Cacti of Anza-Borrego (Field Class)

6 hours

Instructor: Jon Rebman, Ph.D.

Meet at ABDSP Visitor Center flagpole **Fee: Member \$35; Non-member \$45**

Discover the secrets of this unique family of desert plants with a cactus specialist, the curator of Botany at the San Diego Natural History Museum.

Call ABFI for more information: (760)767-4063.

9:30 a.m. – Talk – Upper Coyote Canyon Tailgate Tour

4 hours

Join Ranger Don Strampfer to learn more about Upper Coyote Canyon. Meet at California Department of Forestry Fire Station in Warner Springs. **Bring lunch. A 4x4 vehicle is required.**

10:00 a.m. - ♿ - Junior Rangers

45 minutes

Special program for children ages 7-12. Discover secrets of the desert environment.

Sign up at the Visitor Center as space is limited

12:00 p.m. – Talk – Tailgate Tours

1 hour

Join the only CA State Park pilot, Ranger Kelly McCague, for a special presentation about her responsibilities and see the plane up close. Program will meet and be conducted at the Borrego Springs Airport.

ALL PROGRAMS ARE FREE OF CHARGE UNLESS OTHERWISE NOTED. PROGRAMS ARE HELD AT THE VISITOR CENTER UNLESS OTHERWISE SPECIFIED.

DOGS ARE NOT PERMITTED ON TRAILS OR TOURS. ♿ DENOTES PROGRAMS ACCESSIBLE TO DISABLED. PLEASE CALL AHEAD FOR SPECIAL NEEDS ACCOMMODATION, (760) 767-4205.

APRIL 2009 INTERPRETIVE SCHEDULE



Saturday, April 11, 2009

2:00 p.m. – Talk - ♿ - Dark Shadows

30 minutes

Most creatures that live out here blend in with the desert but there are two dark birds that you might see circling overhead who have adapted to life out here without blending in. Join Park Interpreter Nova Clarke in the Discovery Lab to learn more about these dark shadows.

7:30 p.m. – Campfire - ♿ - Bats of Borrego and Beyond

1 hour

Bats are in the air, everywhere! Find out why these mysterious night flyers are disappearing and how you can help protect them. Meet Ranger Jeri Zemon at Borrego Palm Canyon Campfire Center.



Sunday, April 12, 2009

7:30 a.m. – Walk - ♿ - Beginner's Bird Walk

90 minutes

Join Volunteer Naturalist Ann Keenan for an easy walk around the Visitor Center Garden looking for the common birds of our desert. Meet in the Visitor Center parking lot. Please bring binoculars and a field guide if you have them. (This program will be cancelled if raining.)

10:00 a.m. – Talk/Walk – What is a Borrego?

1 hour

Join Park Interpreter Nova Clarke at the Borrego Palm Canyon trailhead to learn about our resident desert bighorns. From there we will wander part way up the canyon to learn a bit more about the ecosystem, look at flowers, and perhaps see a bighorn.

11:00 a.m. – Talk - ♿ - In Search of the Elusive Elephant Tree

30 Minutes

The seldom seen elephant tree survives in only a few scattered and isolated spots in California. Join Volunteer Naturalist Karen Cormier at the entrance to the Visitor Center to find out how to identify these distinctive trees, hear why Native Americans valued the trees, and discover where you can look for elephant tree herds “in the wild.”

ALL PROGRAMS ARE FREE OF CHARGE UNLESS OTHERWISE NOTED. PROGRAMS ARE HELD AT THE VISITOR CENTER UNLESS OTHERWISE SPECIFIED.

DOGS ARE NOT PERMITTED ON TRAILS OR TOURS. ♿ DENOTES PROGRAMS ACCESSIBLE TO DISABLED. PLEASE CALL AHEAD FOR SPECIAL NEEDS ACCOMMODATION, (760) 767-4205.

APRIL 2009 INTERPRETIVE SCHEDULE



Monday, April 13, 2009

10:00 a.m. - ♿ - Junior Rangers

45 minutes

Special program for children ages 7-12. Discover secrets of the desert environment.
Sign up at the Visitor Center as space is limited

Tuesday, April 14, 2009

10:00 a.m. - ♿ - Junior Rangers

45 minutes

Special program for children ages 7-12. Discover secrets of the desert environment.
Sign up at the Visitor Center as space is limited

Wednesday, April 15, 2009

8:00 a.m. - Hike - Earthquake Valley Panorama

3 hours

Join Volunteer Naturalists, Paul Larson and Mary Ekelund, for a moderate 4-mile hike up Plum Canyon to an overlook high over Earthquake Valley. Discover some interesting plants and geological features along the way. Meet at the entrance to Plum Canyon off Highway 78.

10:00 a.m. - ♿ - Junior Rangers

45 minutes

Special program for children ages 7-12. Discover secrets of the desert environment.
Sign up at the Visitor Center as space is limited

Thursday, April 16, 2009

10:00 a.m. - ♿ - Junior Rangers

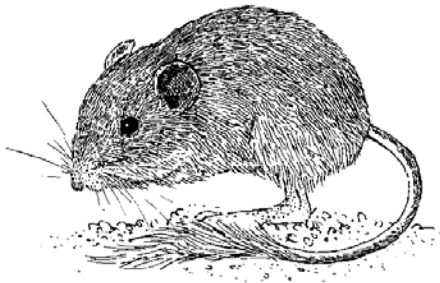
45 minutes

Special program for children ages 7-12. Discover secrets of the desert environment.
Sign up at the Visitor Center as space is limited

1:00 p.m. - Talk - ♿ - Rambling Rodents

30 minutes

Join Park Interpreter Nova Clarke in the Discovery Lab to learn about the common rodents of Anza- Borrego including the packrats, mice, and squirrels and why they might end up visiting you at your home or the campground.



ALL PROGRAMS ARE FREE OF CHARGE UNLESS OTHERWISE NOTED. PROGRAMS ARE HELD AT THE VISITOR CENTER UNLESS OTHERWISE SPECIFIED.

DOGS ARE NOT PERMITTED ON TRAILS OR TOURS. ♿ DENOTES PROGRAMS ACCESSIBLE TO DISABLED. PLEASE CALL AHEAD FOR SPECIAL NEEDS ACCOMMODATION, (760) 767-4205.

APRIL 2009 INTERPRETIVE SCHEDULE



Friday, April 17, 2009

- 10:00 a.m. - ♿ - Junior Rangers** **45 minutes**
Special program for children ages 7-12. Discover secrets of the desert environment.
Sign up at the Visitor Center as space is limited
- 11:00 a.m. - Talk ♿ - Solar Cooking Demonstration** **1 hour**
Solar energy - the old/new technology. Volunteer Naturalist Eleanor Shimeall demonstrates solar oven cooking and explains why this technology is so important. Meet at the Nierenberg Amphitheater outside the Visitor Center.
- 1:00 p.m. - Talk - ♿ - Where is that Wascally Wabbit?** **45 minutes**
Join Park Interpreter Nova Clarke to learn about the rabbits, roadrunners, and coyotes of Anza-Borrego Desert State Park. Find out what the cartoons get right and wrong. Meet in the Discovery Lab at the Visitor Center.

Saturday, April 18, 2009

- 10:00 a.m. - ♿ - Junior Rangers** **45 minutes**
Special program for children ages 7-12. Discover secrets of the desert environment.
Sign up at the Visitor Center as space is limited
- 10:00 a.m. - Talk - Freeman Acquisition Tailgate Tour** **2.5 hours**
Join Ranger Paul Reisman for a journey through some of the most pristine and challenging off road country around. Learn what life was like here in the past and learn how you can help protect and preserve these lands while keeping them open for use. Meet at the intersection of Holly Road and S-22. **High clearance 4x4 required.**
- 11:00 a.m. - Display - ♿ - Usefulness of Desert Plants** **3 hours**
Stop by the visitor center and see the items made from desert plants. Volunteer Naturalist Marge Hatcher will be available for questions about the garden plants around the visitor center and elsewhere in the desert.
- 1:00 p.m. - \$\$ - ♿ - Reptiles of Anza-Borrego** **2.5 hours**
Instructor: Dr. Bradford Hollingsworth, Curator of Herpetology, SDNHM
Fee: Member \$10; Non-member \$15
ABDSP Visitor Center Discovery Lab
Get up close and personal with the enormous diversity of lizards and snakes that call Anza-Borrego home. Dr. Bradford Hollingsworth, Curator of Herpetology at the San Diego Natural History Museum, will share live examples as well as material from the museum's extensive collections to highlight their fascinating life history. **Call ABFI for more information: (760)767-4063.**
- 7:30 p.m. - Campfire - ♿ - Ranger Surprise** **1 hour**
Join Ranger Brittany Veater at the Borrego Palm Canyon Campfire center for an evening campfire program.

ALL PROGRAMS ARE FREE OF CHARGE UNLESS OTHERWISE NOTED. PROGRAMS ARE HELD AT THE VISITOR CENTER UNLESS OTHERWISE SPECIFIED.

DOGS ARE NOT PERMITTED ON TRAILS OR TOURS. ♿ DENOTES PROGRAMS ACCESSIBLE TO DISABLED. PLEASE CALL AHEAD FOR SPECIAL NEEDS ACCOMMODATION, (760) 767-4205.

APRIL 2009 INTERPRETIVE SCHEDULE



Sunday, April 19, 2009

9:00 a.m. - \$\$ - Pacific Crest Trail Hike - Table Mountain Road to Highway 74 **6 hours**

Instructor: Reena Deutsch **Fee: Member \$25; Non-member \$35**

Meet at PCT-signed parking lot on Route 74, one mile east of Route 371.

Celebration Hike! This 5-mile hike will include time for a party (with awards!) to celebrate the completion of ABFI's series of day-hikes traversing 112 miles of the PCT along and through Anza-Borrego Desert State Park. Participants should bring goodies to share. Bring lunch, water, sun protection, and all essentials. Hikes are one-way; each hiker must be willing to participate in a vehicle shuttle. **Call ABFI for more information: (760)767-4063.**

Wednesday, April 22, 2009

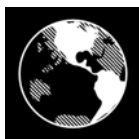
8:00 a.m. - Hike - Squeeze through the Slot **3 hours**

Join Volunteer Naturalists Mary Ekelund and Paul Larson on a moderate 3-mile round trip hike through a winding slot canyon with rugged walls, overhanging rocks, and some surprising wild flowers. You will have to negotiate some tight squeezes and a short climb up a very steep hill. Be sure to bring the usual water, hat, and sturdy footwear. Meet at Buttes Pass Road, 1.5 miles east of Borrego Springs Road on Highway 78.

8:00 a.m. - Celebrate Earth Day - Invasive Plant Removal Work Project **7 hours**

Instructors: Scot Martin and Larry Hendrickson **No charge, but please call to sign up.**

Plan now to contribute some energy and elbow grease to a worthy cause—the removal of non-native and invasive plant species that threaten to choke out native wildflowers and other plants. Easy to moderate. Tools provided. Bring lunch, water, and gloves if you have them. Meet at Borrego Palm Canyon Trailhead. Check website for additional dates. **Call ABFI for more information: (760)767-4063.**



Thursday, April 23, 2009

9:00 a.m. - Talk - Culp Valley Tailgate Tour **1 hour**

Ranger Rodriguez talks about why this area is one of her favorites in the park. Learn a bit of the history of the area and enjoy the beautiful views! Meet at Paroli Camp in Culp Valley: Take Hwy. S-22 west, up the Montezuma Grade; halfway up the mountain, the road becomes two lanes; take the left lane and look for the "Culp Valley Road" sign and turn left onto the dirt road. Follow this road west and take the left fork in the road.

ALL PROGRAMS ARE FREE OF CHARGE UNLESS OTHERWISE NOTED. PROGRAMS ARE HELD AT THE VISITOR CENTER UNLESS OTHERWISE SPECIFIED.

DOGS ARE NOT PERMITTED ON TRAILS OR TOURS. ♿ DENOTES PROGRAMS ACCESSIBLE TO DISABLED. PLEASE CALL AHEAD FOR SPECIAL NEEDS ACCOMMODATION, (760) 767-4205.

APRIL 2009 INTERPRETIVE SCHEDULE



Saturday, April 25, 2009

10:00 a.m. - ♿ - Junior Rangers

45 minutes

Special program for children ages 7-12. Discover secrets of the desert environment. Sign up at the Visitor Center as space is limited

Sunday, April 26, 2009

7:30 a.m. – Walk - ♿ - Beginner's Bird Walk

90 minutes

Join Volunteer Naturalist Ann Keenan for an easy walk around the Visitor Center Garden looking for the common birds of our desert. Meet in the Visitor Center parking lot. Please bring binoculars and a field guide if you have them. (This program will be cancelled if raining.)

10:00 a.m. - Talk - ♿ - Modern Warrior/ Ancient God..... The Scorpion

30 minutes

Join Volunteer Naturalist Gerald Ehly to learn more about the fascinating life of the scorpion and its significance to different cultures all over the world. Meet in the Discovery Lab.

Monday, April 27, 2009

10:00 a.m. – Talk – Native Americans of Coyote Canyon Tailgate Tour

1 hour

Join Ranger Nancy Wittig to learn more about the Native Americans who lived in this beautiful area of the park. Meet at the Desert Gardens Picnic Area in Coyote Canyon.

Wednesday, April 29, 2009

8:00 a.m. – Hike – Mine Wash Vista

3 hours

Join Volunteer Naturalists Mary Ekelund and Paul Larson on a drive back into mine wash where we will continue on foot for a 4-mile round trip hike with ever-changing sights around each bend. We will need to climb a couple of 4-foot dry waterfalls on our way to a spectacular view of Shelter Valley. Be sure to bring the usual water, hat, and sturdy footwear. Meet at the beginning of Mine Wash Road, 2.7 miles east of the Tamarisk Grove intersection on Highway 78.



ALL PROGRAMS ARE FREE OF CHARGE UNLESS OTHERWISE NOTED. PROGRAMS ARE HELD AT THE VISITOR CENTER UNLESS OTHERWISE SPECIFIED.

DOGS ARE NOT PERMITTED ON TRAILS OR TOURS. ♿ DENOTES PROGRAMS ACCESSIBLE TO DISABLED. PLEASE CALL AHEAD FOR SPECIAL NEEDS ACCOMMODATION, (760) 767-4205.

APRIL 2009 INTERPRETIVE SCHEDULE



DESERT SAFETY

- ✓ **Carry water AND drink it**
Saving your water for the hike back has led to death in Anza-Borrego. Drink plenty of water before you leave home, while you hike, and on the return route. If you feel thirsty, it is already too late. Drink lots of water and drink often.
- ✓ **Make sure your vehicle is desert-ready.**
Equip your vehicle for the desert. You should always carry extra water, a shade tarp, a shovel, a tire pump, and extra food.
- ✓ **Prepare yourself.**
In addition to carrying water, you should have protective clothing, sunscreen, a hat, a good map, food and a first aid kit which includes a comb and tweezers.
- ✓ **Have a plan.**
Leave all your trip information with a friend. Tell him/her your destination, the route you intend to follow, your expected return time, a description of your vehicle with license plate number, and the time by which he/she should notify park authorities in case you do not return.
- ✓ **Do not split up the group**
Stay together. Never leave anyone behind to rest.
- ✓ **Leave snakes alone.**
Many venomous snakes live in the desert. If you threaten them, they may strike. It is illegal to harass, catch, or kill any snake within Anza-Borrego. If bitten, remain calm and seek immediate medical attention.
- ✓ **When emergencies happen ...**
Stop. Stay calm. Seek shelter. If you are with your vehicle, remain there; do not leave it. Signal with mirrors, white cloth, whistle (three short blasts on a whistle, pause, then three more, repeat frequently), and put your hood up. It is much easier to find a vehicle in the desert than a person!!!

ALL PROGRAMS ARE FREE OF CHARGE UNLESS OTHERWISE NOTED. PROGRAMS ARE HELD AT THE VISITOR CENTER UNLESS OTHERWISE SPECIFIED.

DOGS ARE NOT PERMITTED ON TRAILS OR TOURS. ♿ DENOTES PROGRAMS ACCESSIBLE TO DISABLED. PLEASE CALL AHEAD FOR SPECIAL NEEDS ACCOMMODATION, (760) 767-4205.